

Harvest Policy At-a-Glance



Forest Carbon Works (FCW) supports climate-smart forestry that strengthens long-term carbon storage, enhances wildlife habitat, and builds resilient, biodiverse forests. Our approach emphasizes mixed-age structure, watershed protection, sensitive habitat stewardship, and durable wood products that extend carbon benefits. FCW’s professional foresters work with landowners to ensure management plans and harvest prescriptions align with these principles and support climate-smart outcomes.

To ensure harvesting aligns with the goals of the carbon project, harvest notification in writing at least 6 months prior to the start of any Commercial Harvest activity is required, and 3 months’ notice for non-commercial harvesting. Before a harvest can begin, FCW must review and approve all planned harvests to confirm alignment with this harvest policy and project goals.

The following technical harvest guidance outlines how these values translate into on-the-ground practices.

Harvest Type	Notice Required	Form Needed	Certification Required?	Re-inventory?	Impact on Revenue Share	Contributes to Harvest Cap
Commercial Harvest	6 months	Intent to Harvest Form	Yes	Yes, if ≥ 5 acres	10% Reduction	Yes
Non-Commercial Harvest	3 months	Intent to Harvest Form (≥1 acre) or NC Reporting Form (<1 acre)	No	Yes, if ≥ 5 acres	No impact	Yes
Permitted Firewood Removal (within annual allotment)	30 days after harvest; no consent required	Annual Survey and / or Reporting Form	No	No	No impact	No
Firewood Removal (above annual allotment)	3 months	Intent to Harvest Form	No	If ≥ 5 acres harvested	10% Reduction if commercial	Yes
Sanitation/Salvage	3 months (when possible)	Intent to Harvest + Forester Attestation	No	Yes, if ≥ 5 acres	No impact, unless sale meets commercial definition	Yes, but LO can exceed cap with FCW approval

Written approval from FCW must be received before any harvest begins, regardless of harvest type. To Begin a harvest notification, visit www.forestcarbonworks.org and download the “Intent to Harvest” form. If you have questions or need to submit your form, contact forestry@forestcarbonworks.com.

Properties with enrolled forestlands under 5k acres may harvest 30% of annual growth each year, and in one year of a five-year cycle they may harvest up to 50% of annual growth; properties greater than 5k acres require customized harvest allowances. Revenue share over credit sales is increased by 10% in years with no commercial harvest. With no harvest activity, program operations are simpler and less resource-intensive, creating efficiencies that FCW returns to members through increased payments.

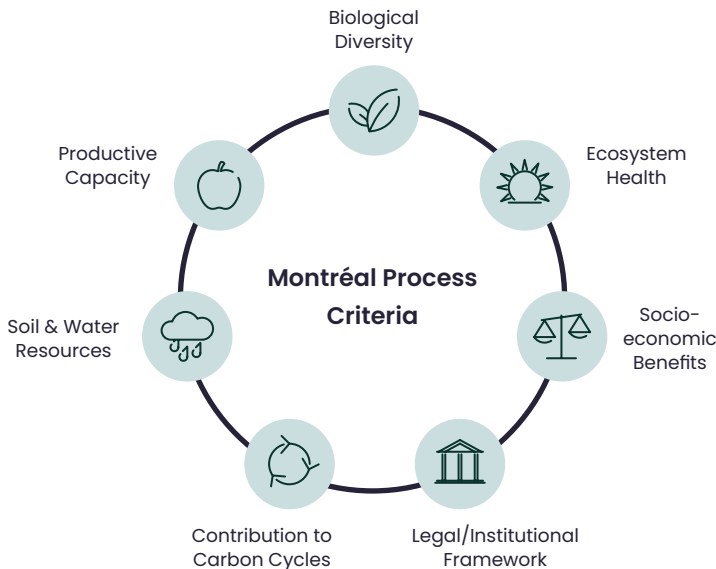


Sustainable Management Requirements

All projects must adhere to the following sustainable management requirements throughout the Crediting Period, subject to validation and verification.

Project areas subject to Commercial Harvesting at the project Start Date in the with-project scenario must adhere to best management practices to protect water, soil stability, forest productivity, wildlife, and other sensitive resources, as published or prescribed by applicable federal, state, or local government agencies, in addition to at least one of the following:

Certification Option	Requirement	Who It Applies To	Key Conditions	Implementation Notes
Forest Certification	Certification by FSC, SFI, or ATFS	Any landowner conducting Commercial Harvest	Certification required before harvest unless planned certification is documented	Must complete within 1 year of enrollment
State-Sanctioned Forestry Program	Enrollment in approved state forestry program	Landowners choosing state program compliance	Program must align with Montréal Process Criteria	Enroll before harvest or within 1 year
Long-Term Forest Management Plan	Submit FMP prepared by Professional Forester	Landowners <5,000 forested acres	Submit before harvest	Must align with Montréal Process Criteria
Tribal Sustainable Practices	Use traditional knowledge-based sustainable management	Tribal landowners	Documentation encouraged but not required	Must align with Montréal Process Criteria



Montréal Process Criteria:

The Montréal Process Criteria are an internationally agreed-upon framework used to define, measure, and monitor sustainable forest management in temperate and boreal forests. They were created by the Montréal Process Working Group, a coalition of 12 countries (including the U.S., Canada, Japan, Australia, and others) that together hold over 90% of the world's temperate and boreal forests.

Please note this document is a summary prepared for informational purposes only.

To contact us, please visit forestcarbonworks.org, call 1 (800) 399-5246 or email inquire@forestcarbonworks.org

